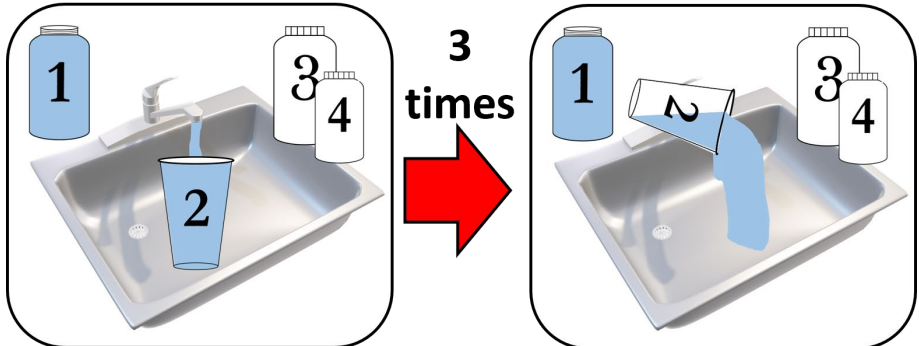




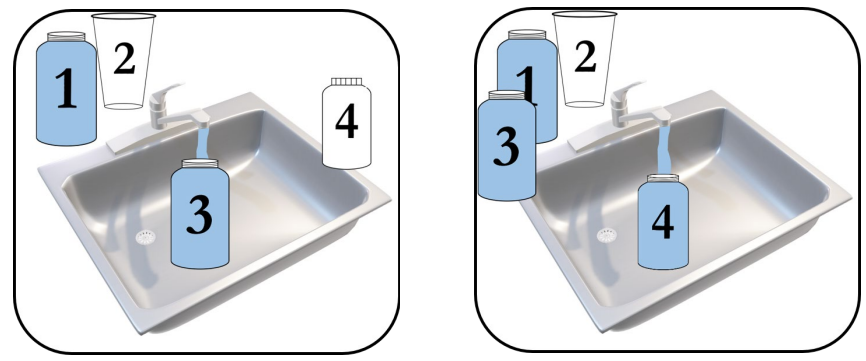
### Step 4. Fill Cup 2 three times. Dump between fills.

Leave the water running, fill the large plastic cup three times. Quickly dump the water out after the first and second fills.



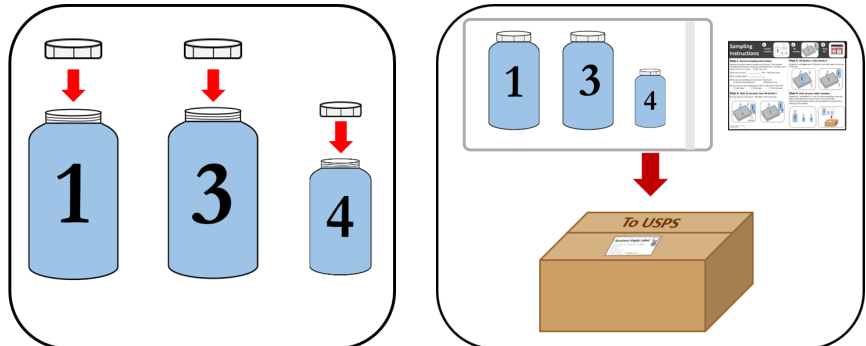
### Step 5. Fill Bottle 3. Then fill Bottle 4.

Leave the water running, immediately fill Bottle 3 and then fill Bottle 4. Bottle 3 represents the 5<sup>th</sup> liter of water and will be tested for lead. Bottle 4 will be used by the laboratory for other water quality analyses.



### Step 6. Pack up your water samples

**Tighten lids.** Seal Bottles 1, 3, and 4 in the provided bag. You may keep the cup. Place your completed Sampling Instructions sheet in the provided box. Stick the Business Reply Label on the provided box and drop off at USPS (your Post Office). Please send the box as soon as possible.



### (Optional) Drop Off Location

Questions? Please contact us at:  
[get-the-lead-out@uiowa.edu](mailto:get-the-lead-out@uiowa.edu)

For a video of how to sample and other information on lead in water visit:  
[gettheleadout.uiowa.edu](http://gettheleadout.uiowa.edu)

Lab Use Only: